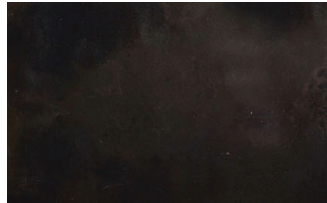
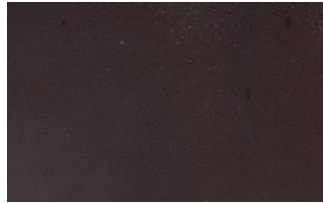


# Slate Black Patina Applied Hot and Cold



Slate Black  
Cold Rolled Steel - Cold



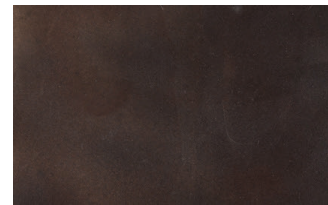
Slate Black  
Brass - Cold



Slate Black  
Aluminum - Cold

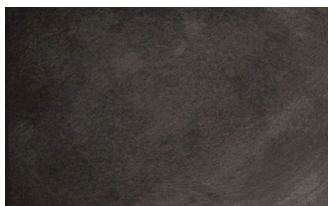


Slate Black  
Stainless Steel - Hot

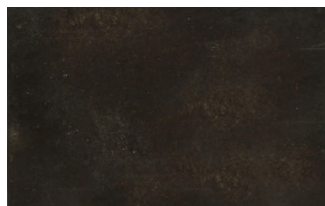


Slate Black  
Aluminum - Hot

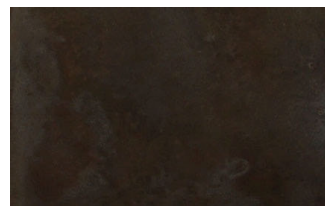
## Patinas for Zinc/Galvanized Steel



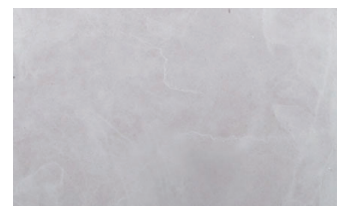
Antiquing on Zinc



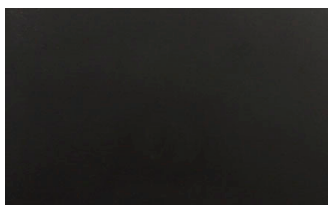
Black Magic on Zinc



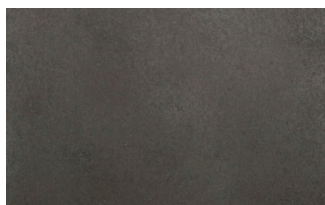
Birchwood M-38 on Zinc



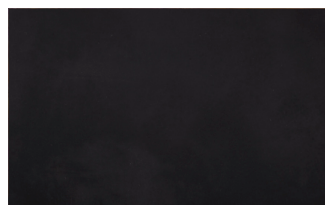
Zinc White on Zinc



Zinc Grey full strength



Zinc Grey diluted 1:1



Darkening on Zinc



Ferric Nitrate on Zinc